

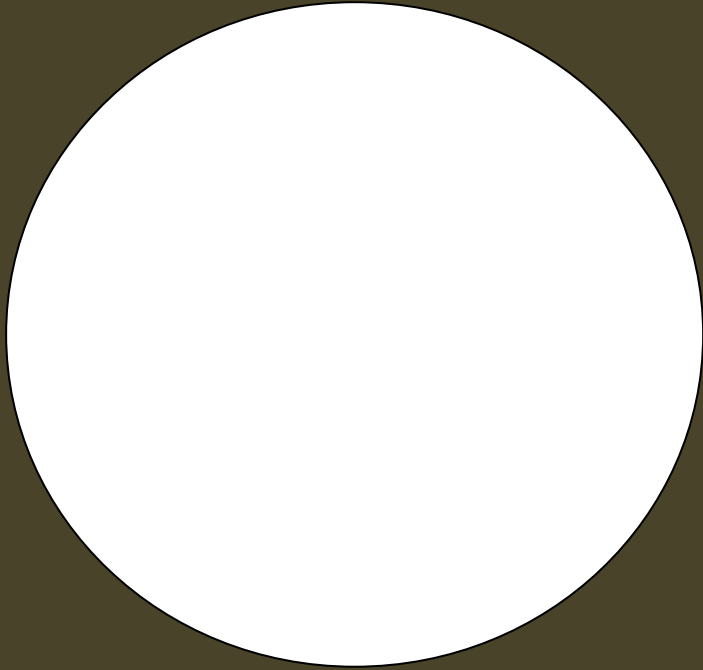
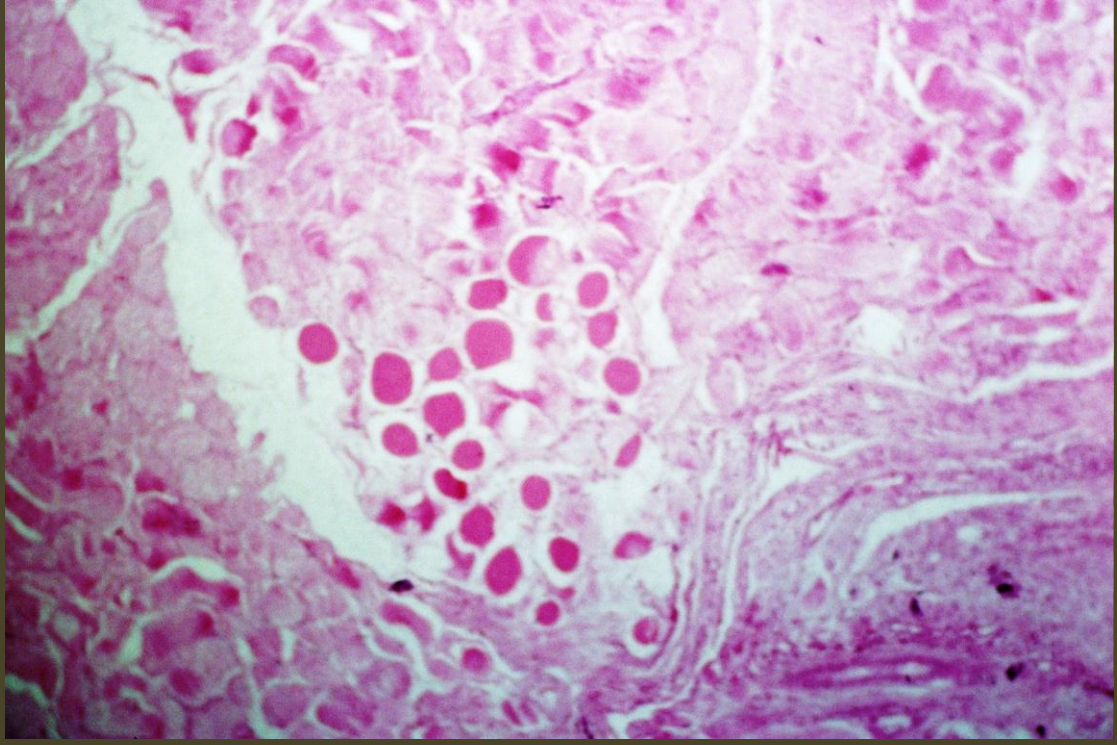
**Organ:** Muscles

**Stain:** H & E

**Lesion:** Hyaline degeneration (Zenker's degeneration )

**Microscopical findings:**

1. The affected muscle fibers are swollen and became more eosinophilic homogenous and structurless.
2. loss of their striation (fields of cohnheim)
3. The nuclei of the muscular tissue are few in number than normal.
4. Few leukocytic infiltration particularly macrophages may be present in between the muscle cells.



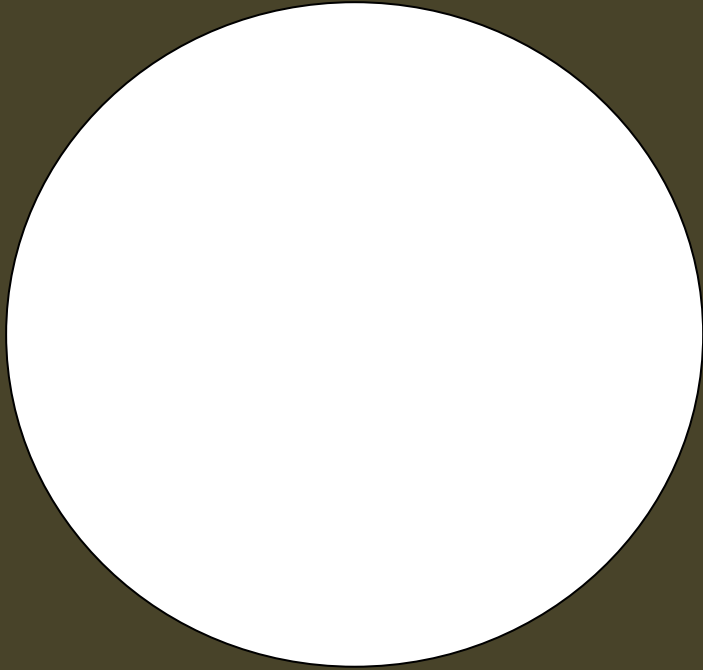
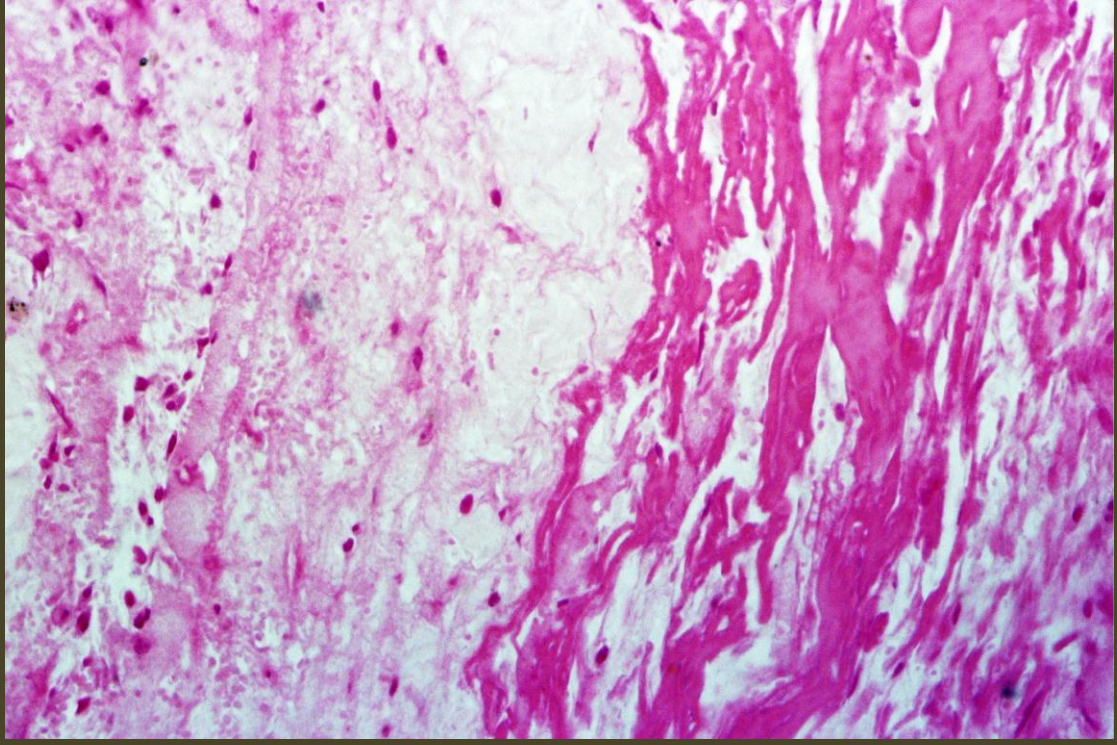
**Organ:** Connective tissues

**Stain:** H & E

**Lesion:** Hyaline degeneration

**Microscopical findings:**

1. The affected collagen fiber are swollen, condensed, thick and showing loss of normal histological structure.
2. The affected fibrous tissues become more eosinophilic, and become homogenous and structurless.
3. The rest of the tissue is normal.



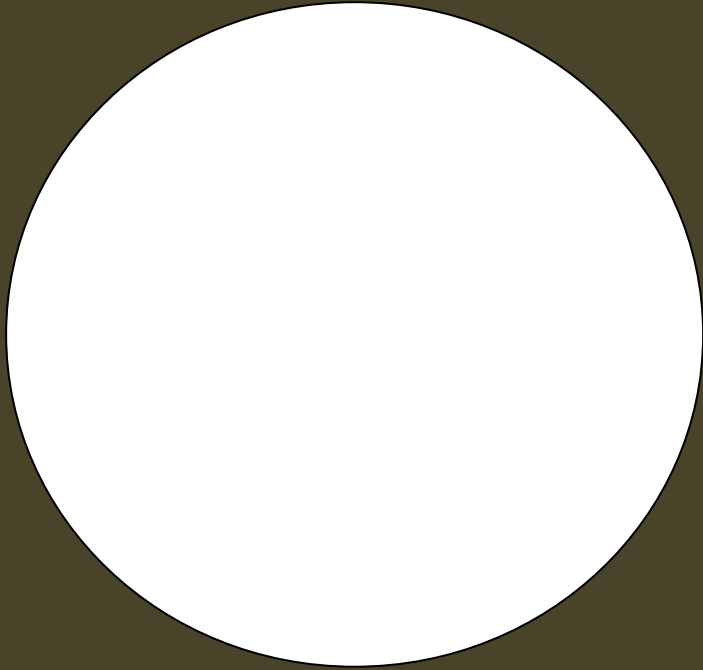
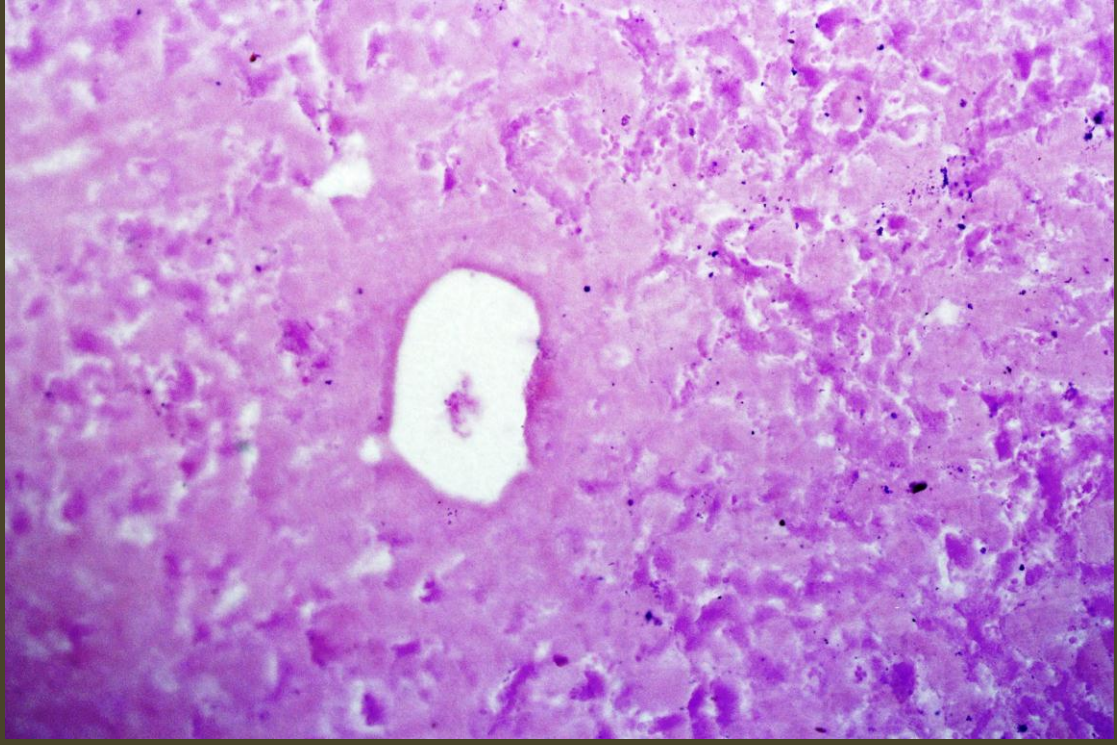
**Organ:** Liver

**Stain:** H & E

**Lesion:** Amyloidosis

**Microscopical findings:**

1. The amyloid substance appears as homogenous structurless eosinophilic amorphous substance .
2. The amyloid substance deposited extacellular in the space of disse between von-kupffer cells and hepatocytes, under the endothelial cells lining the hepatic sinusoid.
3. The affected hepatocytes, sinusoid and bile canaliculi are replaced by amyloid substances.
4. The hepatic cells suffered from pressure atrophy.



**Organ:** Liver

**Stain:** methyl violet

**Lesion:** Amyloidosis

**Microscopical findings:**

1. The amyloid substance taken purplish to pinkish coloration by methyl violet stain.
2. The hepatocytes taken bluish coloration.
3. The central vein and the portal blood vessels nearly devoid from blood.

